

## NutraGammex™

(Serum Protein Isolate)

### Typical Nutritional Profile Comparison

	NutraGammex	WPI	Caseinate	Egg Albumin
Protein-as is (%)	91	89.2	85	81.1
Moisture (%)	4.7	3.8	6	5.8
Ash (%)	2.8	2.6	6	5.3
Fat (%)	0.5	0.2	2.5	0
Carbohydrates (%)	1	4.2	1	7.8
Lactose (%)	0	2.4	<.3	0
Albumin (%)	49	2.7	--	61***
Immunoglobulin G (%)	25**	3**	--	--
Total Calories (kcal/100g)	372	399	360	382

\*\* Tested by Radial Immunodiffusion

\*\*\* Ovalbumin

Minerals (mg/100g)				
Calcium	81	496	1000	62
Chloride	132	100	--	--
Magnesium	4	72.9	--	88
Phosphorus	76	195	--	111
Potassium	75	548	--	1125
Sodium	493	159	400	1280

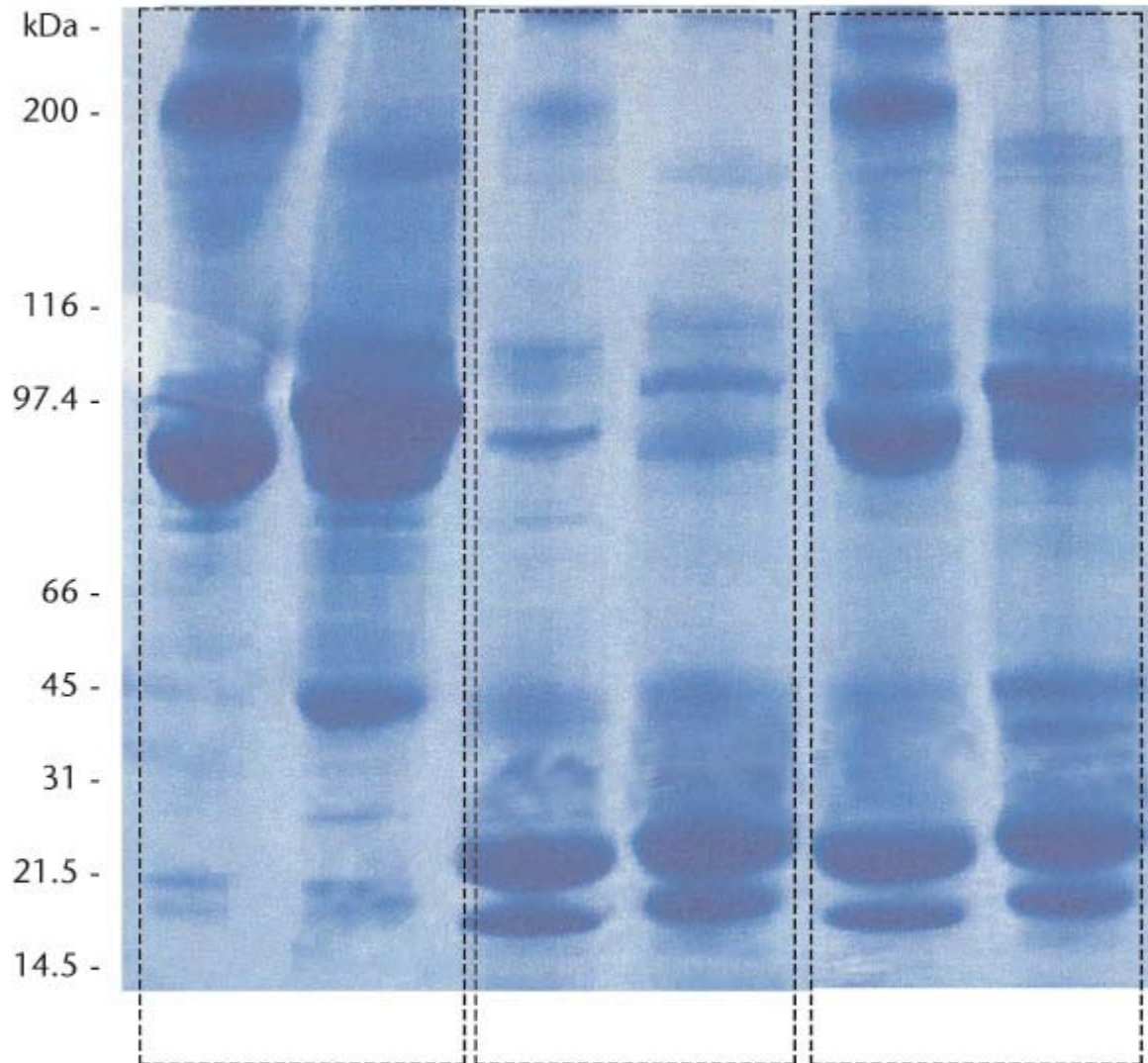
Amino Acid (g/100g protein)				
Alanine	4.3	5.1	2.6	4.7
Arginine	5	2.1	3.6	4.4
Aspartic Acid	9.2	10.5	6.6	8.3
Cystine	2.9	2.4	0.5	2.1
Glutamic Acid	11.6	17.1	20	10.8
Glycine	4	1.6	1.6	2.8
Histidine	2.8	1.6	2.3	1.8
Isoleucine*	2.7	6.2	4.2	4.6
Leucine*	7.6	10.7	8.2	6.8
Lysine*	8.3	11.1	7.3	5.5
Methionine*	2.8	2.2	2.5	2.8
Phenylalanine*	4.7	2.8	4.4	4.7
Proline	5.5	5.5	10.1	3.2
Serine	8.5	4.4	5.6	5.6
Threonine*	7	6.5	4.3	3.7
Tryptophan*	1.6	1.7	1.2	1.0
Tyrosine	4.9	2.8	4.6	3.2
Valine*	6.6	5.6	5.4	5.2

\* Essential Amino Acid

-- Data unavailable

## **NutraGammamax**

*A very different protein molecule.*



**NutraGammamax** Whey Protein

Whey Protein with  
**NutraGammamax**  
makes a more  
complete protein